



**Working together**

**to keep**

**waste**

**in its place!**

Simcoe Transfer Station

**2024**  
Waste Collection Calendar

**Norfolk**  
COUNTY

# Coming in 2024

As of September 28, 2024, Norfolk County’s recycling program will be managed by Circular Materials, the administrator of the common collection system and a not-for-profit organization that is committed to building an efficient and effective recycling system in Ontario.

During the transition, there will be no change to the materials you currently recycle or your recycling schedule.

Learn more at [circularmaterials.ca/ON](http://circularmaterials.ca/ON).

## Reminders

- There is a 4 bag limit, and 18 kg (40 pound) weight limit per bag
- Waste must be set out by 7 a.m. on day of scheduled pickup
- Norfolk County does not accept recyclable material in plastic bags
- Recycling boxes can be purchased from Norfolk County up until September 28, 2024. For costs, locations and more information, contact ServiceNorfolk by email at [askus@norfolkcounty.ca](mailto:askus@norfolkcounty.ca) or phone at 519-426-5870 or 226-NORFOLK, extension 0

## Legend: Important dates

Christmas Tree Depot	Leaf and yard Zone 1
No collection - County Offices and Transfer Stations Closed	Leaf and yard Zone 2
Collection Delay All Norfolk County	Leaf and yard Zone 3
Collection Delay Except Simcoe	Leaf and yard - All zones - collection same day as garbage/recycling
Bulky Item Appointment Deadline 12 p.m.	Turkey Point extra garbage pick up starts
Household Hazardous Waste	Turkey Point extra garbage pick up ends

To request an accessible copy of the calendar visit [NorfolkCounty.ca/Accessibility](http://NorfolkCounty.ca/Accessibility).

# Know before you throw

## Small recycling box: Paper fibre

Examples of accepted materials:



\*Loose plastic bags must be placed inside one bag and tied shut.

## Tall recycling box: Containers

Examples of accepted materials:



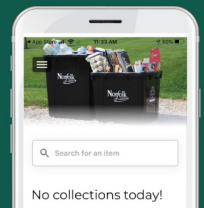
## Garbage bag

Not accepted in  
recycling program:



## Get the **FREE** Recycle Coach App

Residential garbage and recycling  
schedules, reminders, tips and more!



# Year-round take-back depot locations

Please check [rpra.ca](http://rpra.ca) for additional locations. Please contact each location for complete information as restrictions may apply.

## Electronics

### Simcoe:

Staples Business Depot  
519-426-4060

### Tillsonburg:

Staples Business Depot  
519-688-2196

### Waterford:

Norfolk Disposal  
519-443-8022

## Thermostat containing mercury

### Simcoe:

Brody's Mechanical  
Services Inc.  
519-428-4102

D & B Climate Care  
519-428-4000

## Paints and coatings

EMPTY and DRY metal paint cans can be recycled in the tall box. Remove lids to show they are empty and dry.

### Simcoe:

RONA Cashway  
519-426-2740

### Tillsonburg:

RONA Moffatt & Powell  
519-842-4201

## Motor oil and antifreeze

### Delhi

Canadian Tire  
519-582-2450

### Simcoe:

Canadian Tire  
519-426-1513

Jiffy Lube  
519-428-3101

### Tillsonburg:

Canadian Tire  
519-842-5926

## Single-Use Batteries

### Delhi:

Delhi District  
Secondary School  
519-582-0410

### Simcoe:

Canadian Tire  
519-426-1513

RONA Cashway  
519-426-2740

Staples Business Depot  
519-426-4060

### Tillsonburg:

Canadian Tire  
519-842-5926

## Rechargeable batteries and cell phones

### Simcoe:

Staples Business Depot  
519-426-4060

Canadian Tire  
519-426-1513

RONA Cashway  
519-426-2740

### Tillsonburg:

Canadian Tire  
519-842-5926

## Tires

Visit [rpra.ca/tires](http://rpra.ca/tires) to find FREE tire drop off locations in Norfolk or ask your local mechanic or tire retailer.

## Fluorescent bulbs and tubes

### Simcoe:

RONA Cashway  
519-426-2740

## Propane tanks

### Tillsonburg:

Dodsley Propane  
519-842-9700

### Waterford:

Esso & BB Family  
Convenience  
519-443-7371

## Freon appliances and freon removal

### Waterford:

Cookson Disposal  
Services  
519-428-1515

JLM Metal Recycling  
519-443-7999

Norfolk Disposal  
519-443-8022

## Medications and sharps

Most pharmacies  
participate in the

Medications Return  
and the Sharps  
Collection programs.  
For locations, visit  
healthsteward.ca.

## Fire Extinguishers

### Tillsonburg:

Tillsonburg Fire and  
Safety 519-688-3473

### Brantford:

Dennis Evans Fire  
Equipment  
519-753-0651

Scrapping fee applies  
at both locations

---

# Household hazardous waste events

## Simcoe Facilities Operations Building

591 Norfolk St S, Simcoe  
Saturday April 20  
9 a.m. to 2 p.m.

## Simcoe Facilities Operations Building

591 Norfolk St S, Simcoe  
Saturday September 28  
9 a.m. to 2 p.m.

## Delhi Roads Central Yard

340 Argyle Ave, Delhi  
Saturday May 25  
9 a.m. to 1 p.m.

## Langton Roads West Yard

1630 County Road 45, Langton  
Saturday October 19  
9 a.m. to 1 p.m.

Household hazardous waste events are **by appointment only**. Registration for appointments will be available one month before the event. Visit [NorfolkCounty.ca/Waste](http://NorfolkCounty.ca/Waste) for up-to-date information, how to register, and a list of accepted materials.

# January

Sunday	Monday	Tuesday	Wednesday	Thursday	Friday	Saturday
	1	2	3	4	5	6
7	8	9	10	11	12	13
14	15	16	17	18	19	20
21	22	23	24	25	26	27
28	29	30	31			

Flip to inside front cover for colour legend

## Recycling: A numbers game

The symbol on the bottom of a plastic item identifies the type of plastic resin it is made of. Not all items are recyclable. The Recycle Coach app is a great way to confirm what can be recycled in Norfolk County. See the back cover for more information about the app.



**1 PETE**  
Polyethylene  
terephthalate



**2 HDPE**  
High-density  
polyethylene



**3 PVC**  
Polyvinyl chloride



**4 LDPE**  
Low-density  
polyethylene

# February

Sunday	Monday	Tuesday	Wednesday	Thursday	Friday	Saturday
				1	2	3
4	5	6	7	8	9	10
11	12	13	14	15	16	17
18	19	20	21	22	23	24
25	26	27	28	29		

Flip to inside front cover for colour legend



**Commonly recycled**



**Sometimes recycled**



**Rarely recycled**



**5 PP**  
Polypropylene



**6 PS**  
Polystyrene,  
a.k.a. Styrofoam



**7 Other**  
Plastics made from resins other  
than those previously listed



Follow us @NorfolkCountyCA

# March

Sunday	Monday	Tuesday	Wednesday	Thursday	Friday	Saturday
					1	2
3	4	5	6	7	8	9
10	11	12	13	14	15	16
17	18	19	20	21	22	23
24 31	25	26	27	28	29	30

Flip to inside front cover for colour legend

## Leaf and yard waste

Norfolk County collects leaf and yard waste in the following zones within urban areas:

	<b>Zone 1:</b> Long Point & Simcoe
	<b>Zone 2:</b> Port Dover, Langton, Port Rowan
	<b>Zone 3:</b> Turkey Point, Vittoria, St. Williams, Courtland, Delhi, Waterford

All leaves and yard waste must be placed curbside with regular collection in **BROWN PAPER LEAF BAGS** with the tops rolled shut.

### Please note:

- No bag limit for paper bags
- Weight limit is 18kg or 40lbs per bag
- No garbage, burnt leaves, flower pots, or animal waste allowed
- Leaves and yard waste in plastic bags will not be collected
- Trimmings may be tied or bundled in less than 3' (91 cm) lengths
- No plastic twine or metal ties on bundles

Please visit [NorfolkCounty.ca/waste](http://NorfolkCounty.ca/waste) for a complete list of accepted and unaccepted material.



# April

Sunday	Monday	Tuesday	Wednesday	Thursday	Friday	Saturday
	1	2	3	4	5	6
7	8	9	10	11	12	13
14	15	16	17	18	19	20
21	22	23	24	25	26	27
28	29	30				

Flip to inside front cover for colour legend

**For all areas outside of Zone 1, 2 and 3**, leaves and yard waste can be delivered to the Transfer Stations in paper bags or bulk for composting free of charge. Loads of brush and branches will be charged the regular tipping fee.

Thanks to our Delhi District Secondary School co-op student William Welsh for creating our illustrated Norfolk County Mascots



# May

Sunday	Monday	Tuesday	Wednesday	Thursday	Friday	Saturday
			1	2	3	4
5	6	7	8	9	10	11
12	13	14	15	16	17	18
19	20	21	22	23	24	25
26	27	28	29	30	31	

Flip to inside front cover for colour legend

## Bulky waste pickup

The bulky item pick-up program is available across Norfolk County.

### Accepted items include:

- Furniture
- Appliances (Freon removed)
- Carpet and under padding (4ft by 2 ft)
- Other household items

To request a bulky item pickup, contact ServiceNorfolk at 226-NORFOLK or 519-426-5870, extension 0.

### Please note:

- Cost \$40.00 including tax per pick up (not refundable)
- Load sizes are limited to two cubic metres and materials must be able to be lifted by two people
- Materials must be curbside by 7:00 a.m. on the Monday of the collection week



# June

Sunday	Monday	Tuesday	Wednesday	Thursday	Friday	Saturday
						1
2	3	4	5	6	7	8
9	10	11	12	13	14	15
16	17	18	19	20	21	22
23 30	24	25	26	27	28	29

Flip to inside front cover for colour legend

## Pickup dates and appointment deadlines:

Pickup dates:	Book appointment by 12:00 p.m. on:
January 22 – 26	January 19
February 26 – March 1	February 23
March 25 – 28	March 22
April 22 – 26	April 19
May 27 – 31	May 24
June 24 – 28	June 21
July 29 – August 2	July 26
August 26 – 30	August 23
September 30 - October 4	September 27
November 25 - 29	November 22
December 16 – 20	December 13

# July

Sunday	Monday	Tuesday	Wednesday	Thursday	Friday	Saturday
	1	2	3	4	5	6
7	8	9	10	11	12	13
14	15	16	17	18	19	20
21	22	23	24	25	26	27
28	29	30	31			

Flip to inside front cover for colour legend

## Composting tips

Composting is a natural process in which organic materials decompose, and become nutrient-rich soil amendment. It aids erosion control, promotes soil fertility, and stimulates healthy root development. Your lawn and garden will love it!

Composters can be purchased from the Simcoe Recreation Centre (182 South Drive, Simcoe).

Here are answers to some common composting questions.

### How long will composting take?

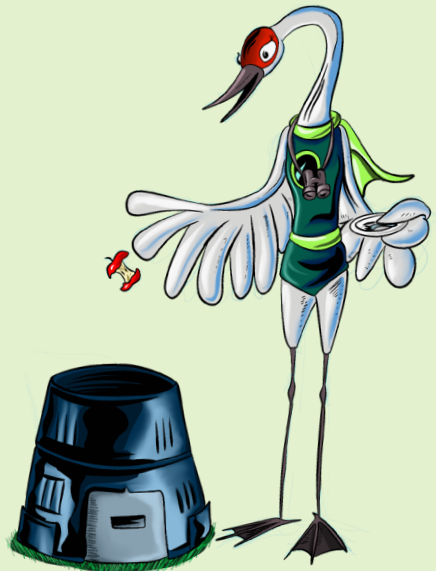
- Composting can take from 3 to 18 months, depending upon how well the pile is maintained
- A dry or frozen pile decomposes more slowly, as does one that is never turned
- A one-inch (2.5 cm) layer of finished compost or garden soil spread on top of kitchen scraps will speed things up
- Compost is ready when its texture is crumbly and it has a pleasant, earthy smell

Sunday	Monday	Tuesday	Wednesday	Thursday	Friday	Saturday
				1	2	3
4	5	6	7	8	9	10
11	12	13	14	15	16	17
18	19	20	21	22	23	24
25	26	27	28	29	30	31

Flip to inside front cover for colour legend

## How do I ensure the compost doesn't smell unpleasant?

- Avoid composting meat, fish or dairy items, as well as bones, pet waste/litter, cooking oil, rhubarb leaves, and toxic or diseased plants and weeds
- Aerate compost regularly by turning it
- Add dry materials if it is too wet
- Shredded paper can be added to compost that is too wet
- Bury fruit and vegetable trimmings at least 6 inches (15 cm) deep



# September

Sunday	Monday	Tuesday	Wednesday	Thursday	Friday	Saturday
1	2	3	4	5	6	7
8	9	10	11	12	13	14
15	16	17	18	19	20	21
22	23	24	25	26	27	28
29	30					

Flip to inside front cover for colour legend

## Litterless lunches

Litterless lunches are good for both parents and the school. Litterless lunches decrease the amount of garbage in school and workplaces.

A litterless lunch can be cheaper to make than a disposable lunch, as it uses foods that are not pre-packaged.

With a bit of extra preparation, litterless lunches can be achieved.

Once you get into the habit, you will be amazed how easy it is to do. Mother Earth will thank you!

### Tips for packing a litterless lunch:

- Use reusable lunch bags
- Buy larger size beverages—or water—and pour into reusable drink containers instead of juice boxes
- Pack sandwiches in reusable containers, soups, stews and curry in a thermos
- Buy snacks in bulk and divide them into single-serving reusable containers

# October

Sunday	Monday	Tuesday	Wednesday	Thursday	Friday	Saturday
		1	2	3	4	5
6	7	8	9	10	11	12
13	14	15	16	17	18	19
20	21	22	23	24	25	26
27	28	29	30	31		

Flip to inside front cover for colour legend

- Remember to put in a metal spoon/fork
- Use small reusable containers for snacks instead of pre-packaged
  - Fill up a container with plain yogurt, granola and berries instead of yogurt tubes
  - Try large batch baking/freezing muffins and granola bars and pop into small containers
- Bring home uneaten food and compost any uneaten organics
- Involve kids in packing and unpacking litterless lunches to teach them about the environment and engage them in food preparation and food safety



# November

Sunday	Monday	Tuesday	Wednesday	Thursday	Friday	Saturday
					1	2
3	4	5	6	7	8	9
10	11	12	13	14	15	16
17	18	19	20	21	22	23
24	25	26	27	28	29	30

Flip to inside front cover for colour legend

## Christmas tree recycling

### Depots are open:

- December 26, 2024 to January 12, 2025

### Remember to:

- Remove all decorations, lights, wire, tree skirts, stands and nails
- Do not use plastic fake snow on your tree; your tree cannot be recycled
- Avoid using a plastic tree bag. Instead, reuse an old sheet or blanket





# December

Sunday	Monday	Tuesday	Wednesday	Thursday	Friday	Saturday
1	2	3	4	5	6	7
8	9	10	11	12	13	14
15	16	17	18	19	20	21
22	23	24	25	26	27	28
29	30	31				

Flip to inside front cover for colour legend

## Christmas Tree Depot Drop-off locations:

- Courtland Community Centre, 276 Main Street, Courtland
- Delhi Bulk Water Depot, 80 Industrial Road (off Argyle Ave.)
- Langton Arena, 28 Albert Street
- Port Dover, end of Nelson Street E.
- Port Rowan Community Centre, 14 College Avenue
- Simcoe Transfer Station, 164 Fourteenth Street
- Simcoe Operations Yard, 8 Schellburg Avenue
- South Walsingham Transfer Station 1180 Concession Road 3
- Walsh Sand Dome, 984 Charlotteville Road 7
- Waterford Heritage & Agricultural Museum, 159 Nichol Street



# Transfer Stations

## Locations:

### Simcoe Transfer Station

164 Fourteenth Street West, Simcoe

- Minimum fee: \$16
- Tipping fee: \$146/tonne
- Monday to Friday:  
8:00 a.m. to 4:15 p.m.
- Saturday: 9:00 a.m. to 1:00 p.m.
- Closed Sundays and Stat Holidays
- Hours subject to change

### South Walsingham Transfer Station

1180 3rd Concession Road,  
Port Rowan

- Minimum fee: \$20
- Tipping fee: \$146/tonne
- Monday, Wednesday, Friday:  
10:00 a.m. to 3:45 p.m.
- Saturday: 9:00 a.m. to 1:00 p.m.
- Closed Sundays, Tuesdays,  
Thursdays and Stat Holidays
- Hours subject to change

## Fees and payment:

- Minimum fee for garbage, metal, wood or brush
- Yard waste is free to drop off
- Accepted payment types are Visa, Mastercard, Debit
- Cash not accepted
- Fees subject to change

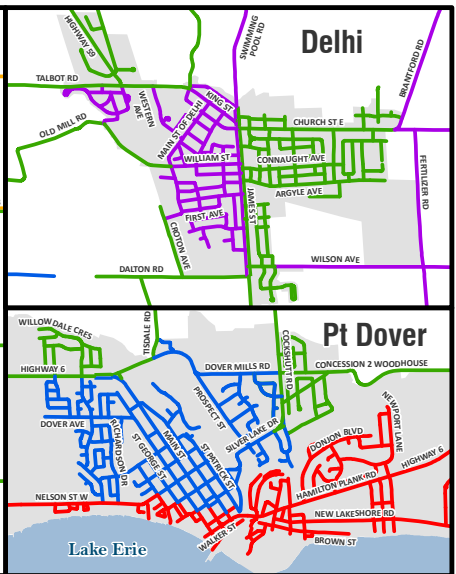
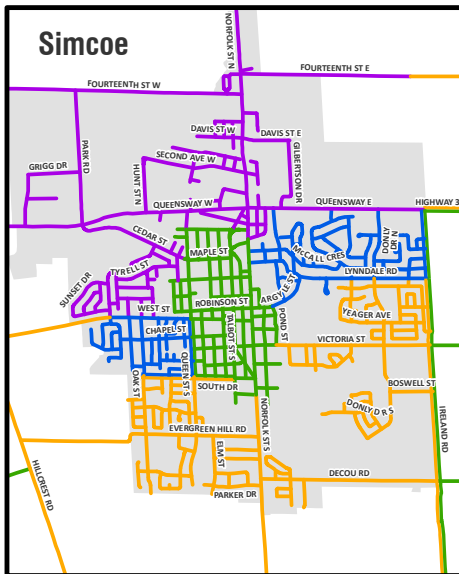
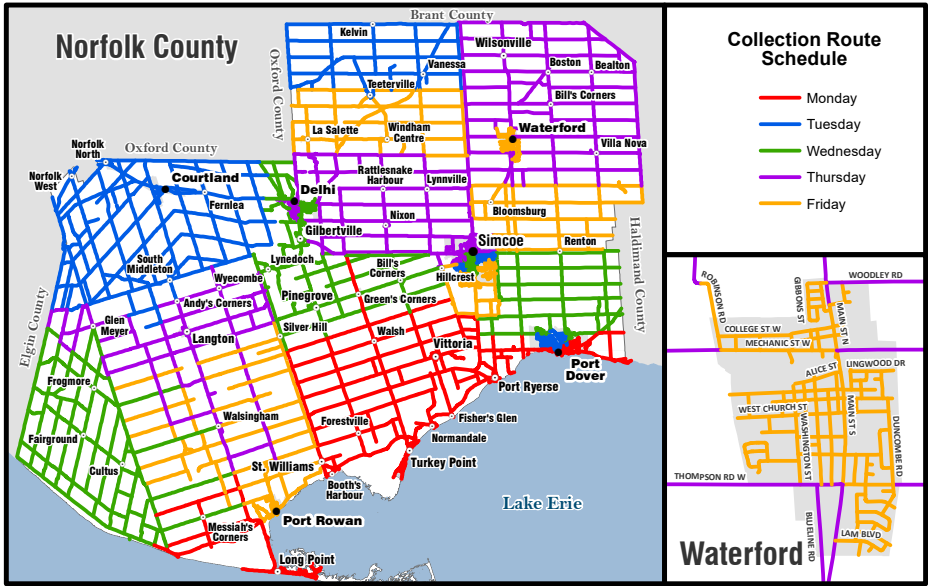
## Acceptable materials:

- Household garbage and furniture.
- Appliances and other metal items (articles containing CFCs (Freon) must have a sticker indicating that a licensed professional has removed the CFCs)
- Construction materials
- Large branches and timber under 31cm (12") in length
- Leaf and yard waste: leaves, grass clippings, weeds, garden plants, in bulk or paper bags
- Bundles are limited to 3' long by 2' diameter
- Tires, up to maximum 10 tires per day

## Tips:

- Materials must be separated (garbage, wood, metal, yard waste). Materials not sorted properly may cause your entire load to be charged the tipping fee.
- Declare where you are from and the type of waste you have
- Drive to the designated unloading area(s) for your material
- Prior to leaving the site, vehicles must return to the scale. The computerized weigh scale system calculates waste disposal charges. Payment is due upon leaving the scale

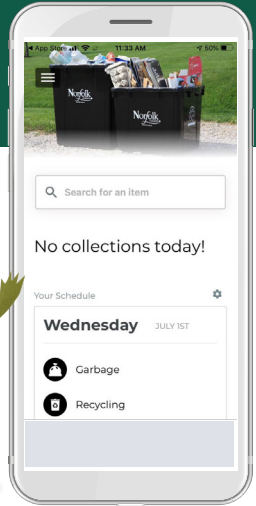
# Garbage and recycling collection schedules





# Get the **FREE** Recycle Coach App

Residential garbage and recycling  
schedules, reminders, tips and more!



## Contact Norfolk County

To purchase recycling boxes, schedule bulky item pickup, report missed garbage and recycling collection, and for general waste management inquiries, contact ServiceNorfolk:

185 Robinson St., Suite 100, Simcoe  
519-426-5870 or 226-NORFOLK, extension 0  
[NorfolkCounty.ca/Waste](http://NorfolkCounty.ca/Waste)

